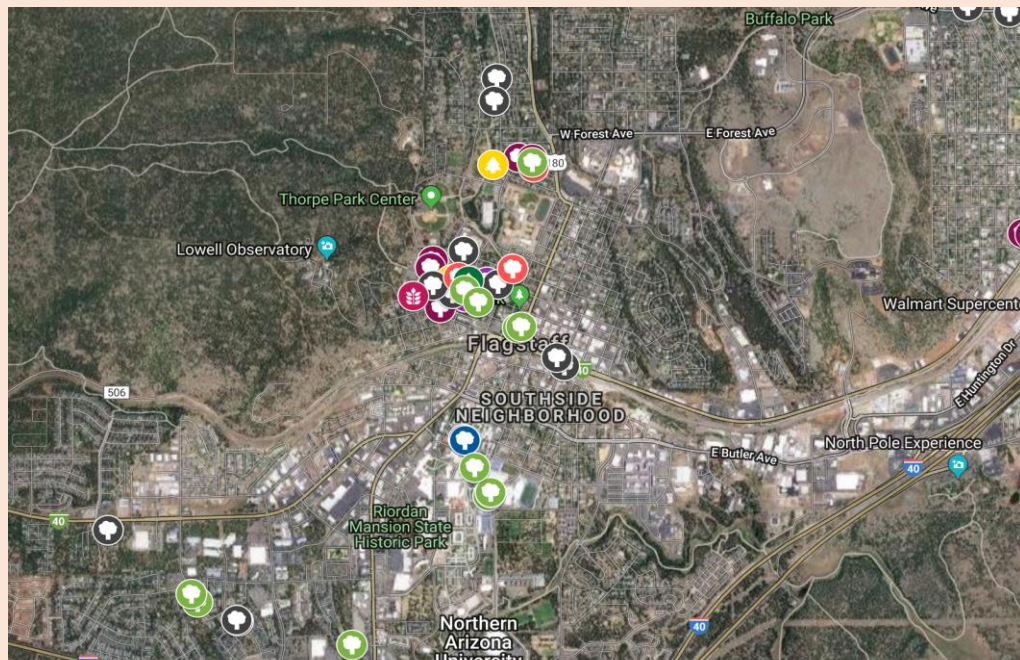


# Flagstaff Gleaning Initiative

An interactive map that addresses food waste and access in the Flagstaff community

In the spring of 2019 the Community-University Public-Inquiry program partnered with the organization Flagstaff Foodlink to create a research project that would benefit the community of Flagstaff. The project turned into a map that any member of Flagstaff could use to locate public fruit trees located in and around Flagstaff. These fruit trees provide free fruit to be gleaned by the community when they are in season. The fruit map includes varieties of apple, peach, pear, and cherry. These trees are an abundant resource of free fruit that can be eaten plain, turned into cider, or even jam!



Interested in getting involved or learning more about the Flagstaff Gleaning Initiative?

Visit our website and check out the fruit tree map at:  
<https://flagstafflinkgleaninginitiative.food.blog/flagstaff-fruit-tree-map/>